



**HOUSATONIC VALLEY  
HEALTH DISTRICT**



**FY21-22**

**ANNUAL  
REPORT**

# CONTENTS

---

**02**

A MESSAGE FROM DIRECTOR OF HEALTH

---

**03**

MISSION, VISION, AND VALUES

---

**04**

10 ESSENTIAL PUBLIC HEALTH SERVICES

---

**05**

HVHD PUBLIC HEALTH SERVICES OVERVIEW

---

**06 - 09**

COVID-19 PANDEMIC YEAR IN REVIEW

---

**10 - 18**

DIVISION HIGHLIGHTS

---

**19**

FINANCIAL REVIEW

---

**20 - 22**

COMMUNITY PARTNERS & STAKEHOLDERS

---

**23 - 34**

FY21-22 HVHD PUBLIC HEALTH DATA

# A Message from the Director of Health

On behalf of the Housatonic Valley Health District (HVHD), we are please to share with you our FY21-22 Annual Report.

Our Board of Directors and staff are dedicated to accomplishing our vision, mission, and goals. They are also highly motivated to operate Housatonic Valley Health District in a transparent manner and to be accountable to all its community members, stakeholders, and partners.

Our primary objectives for fiscal year 2021-2022 were to create better health outcomes and promote the highest attainable standard of health while ensuring effective communication with the community, stakeholders, and partners. We accomplished this through our weekly COVID-19 vaccination and Rapid PCR COVID-19 testing clinics, environmental health inspections and licenses, and Medical Reserve Corps volunteer efforts. Additionally, weekly COVID-19 reports were distributed to the community to ensure that everyone was informed and this information was easily accessible.

While many of our efforts continued to be directed towards addressing the COVID-19 pandemic, other public health issues did not stop. We continued our work on many fronts, including well and septic issues, drinking water issues, housing and hoarding issues, and other communicable diseases.

Moving forward with the next Fiscal Year 22-23, our hope is that we can continue to support our communities through providing health services and relevant information to the residents of our jurisdiction.

Stay well,



Lisa Michelle Morrissey, MPH  
Director of Health



## Leadership Team

Lisa Michelle Morrissey, MPH  
Director of Health

Heidi Bettcher, RN, BSN  
Community Health Nursing Supervisor

Joe Kmetz  
Chief Sanitarian

## Board of Directors

**New Milford** Chris Cosgrove  
Michael Crespan  
Dr. Jeremy Levin

**Oxford** Fred D'Amico  
Larry Ellis

**Southbury** Dr. Paul Nee

**Washington** Dean Sarjeant

**Woodbury** Anne Neumann,  
Board Chair

Report Prepared By:  
Ruth Quattro, MPH

LISA MICHELLE MORRISSEY, MPH,  
DIRECTOR OF HEALTH

## MISSION

To create better health outcomes in our communities and promote the highest attainable standard of health.

## VISION

- To promote a culture of health
- To enable accessibility to all services for the community
- To provide the highest quality of public health leadership and services
- To create better health outcomes through the prevention of disease & injury
- To promote policies that enable longer and healthier lives

## VALUES

- Community First
- Professional Service
- Inclusion, Equity, and Accessibility

**TOWNS  
SERVED**

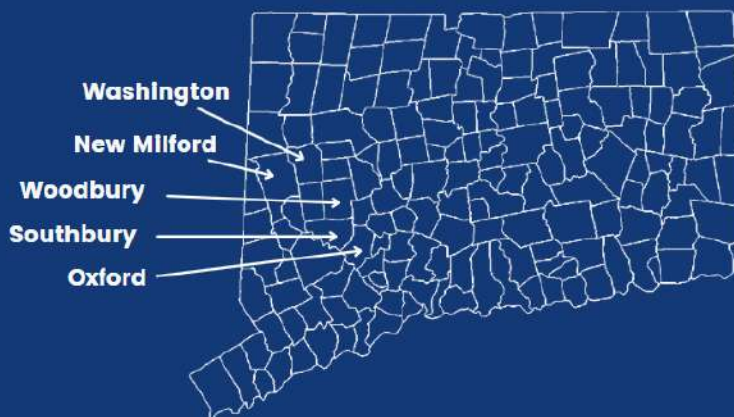
**5**

**SQUARE  
MILES**

**212.3**

**POPULATION  
SERVED**

**74,861**



# 10 Essential Services of Public Health

1

Assess and monitor population health status, factors that influence health, and community needs and assets

2

Investigate, diagnose, and address health problems and hazards affecting the population

3

Communicate effectively to inform and educate people about health, factors that influence it, and how to improve it

4

Strengthen, support, and mobilize communities and partnerships to improve health

5

Create, champion, and implement policies, plans, and laws that impact health

6

Utilize legal and regulatory actions designed to improve and protect the public's health

7

Assure an effective system that enables equitable access to the individual services and care needed to be healthy

8

Build and support a diverse and skilled public health workforce

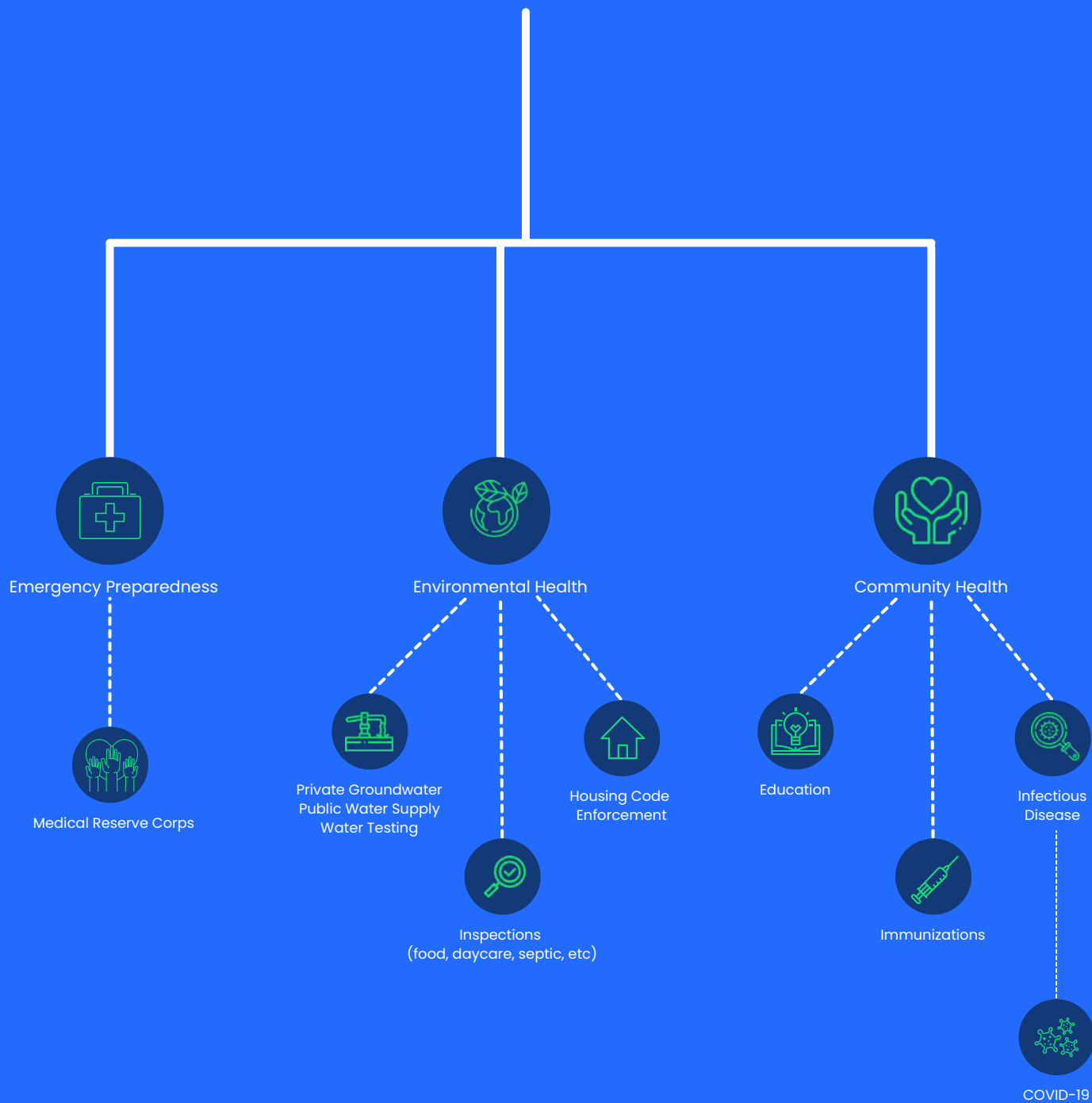
9

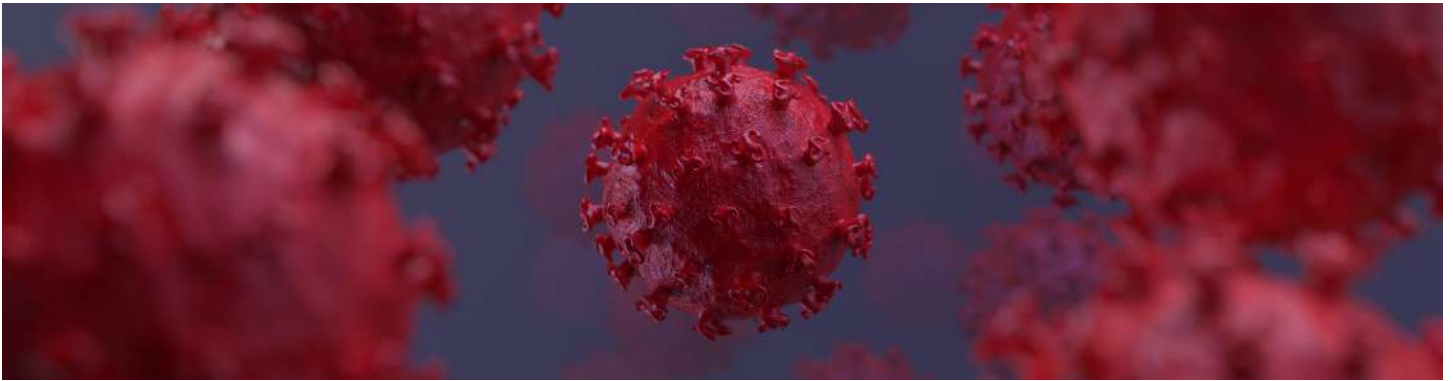
Improve and innovate public health functions through ongoing evaluation, research, and continuous quality improvement

10

Build and maintain a strong organizational infrastructure for public health

# HVHD Public Health Services





## COVID-19 Pandemic Year in Review

The COVID-19 pandemic continued through 2022, ebbing and flowing through numerous surges, significant outbreaks, and citing of new variants. Public frustrations rose around constant changes in prevention recommendations in schools, businesses, daycares, and the community as a whole. Despite all the roadblocks and changes, HVHD continued its work to mitigate the impact of the COVID-19 pandemic and provide updated information so the community could make educated decisions.

HVHD held and continues to hold weekly COVID-19 vaccination clinics at our New Milford and Southbury clinic locations. We have administered around 26,000 COVID-19 vaccines since the inception of our COVID-19 clinics.

In October 2021, we began releasing weekly COVID-19 reports which provides a snapshot of each participating town's levels and any updates in relation to the COVID-19 pandemic.

In order to meet the community's needs, we partnered with Griffin Hospital to increase the number of clinics and vaccine stock for the 5-11 year old age group.

In February 2022, our efforts shifted to the new undertaking of Rapid PCR COVID-19 testing to ensure the safety and wellbeing of our communities. We held and continue to hold weekly Rapid PCR testing clinics at our New Milford and Southbury clinic locations.

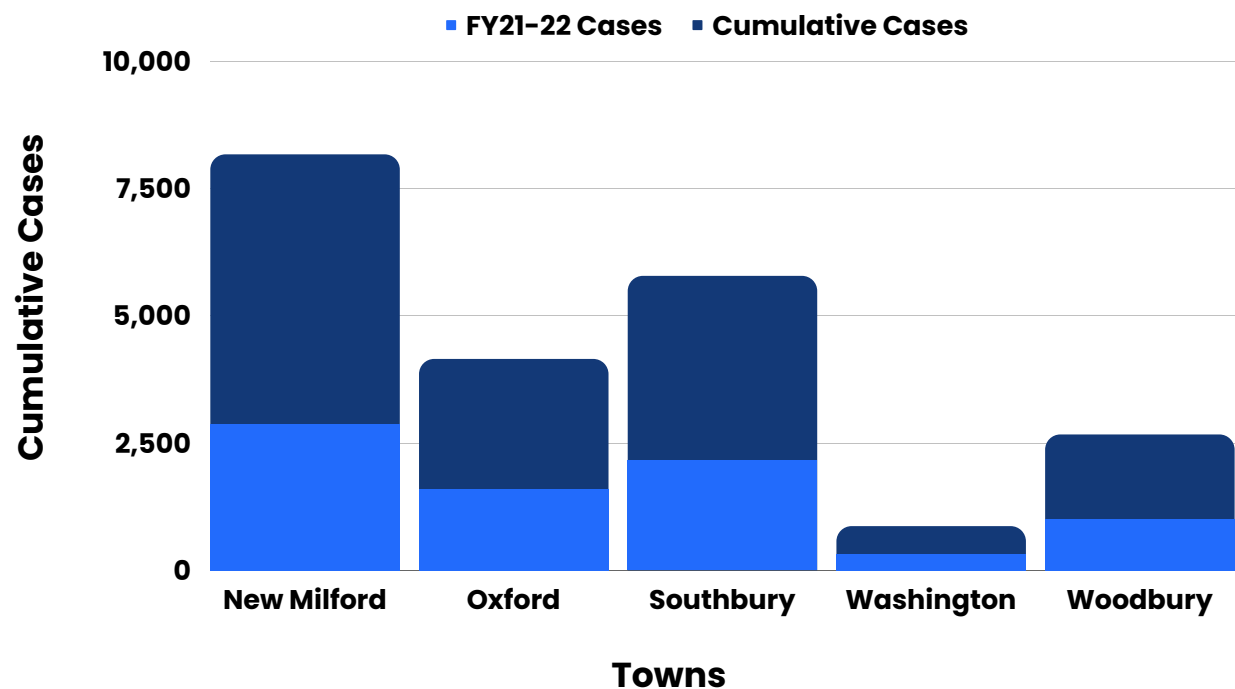
Our team continues to work tirelessly to ensure the safety of our communities in our efforts to mitigate COVID-19.

While levels continue to fluctuate, we are hopeful that we will be able to keep our communities safe through our various COVID-19 vaccination, testing, and education efforts.

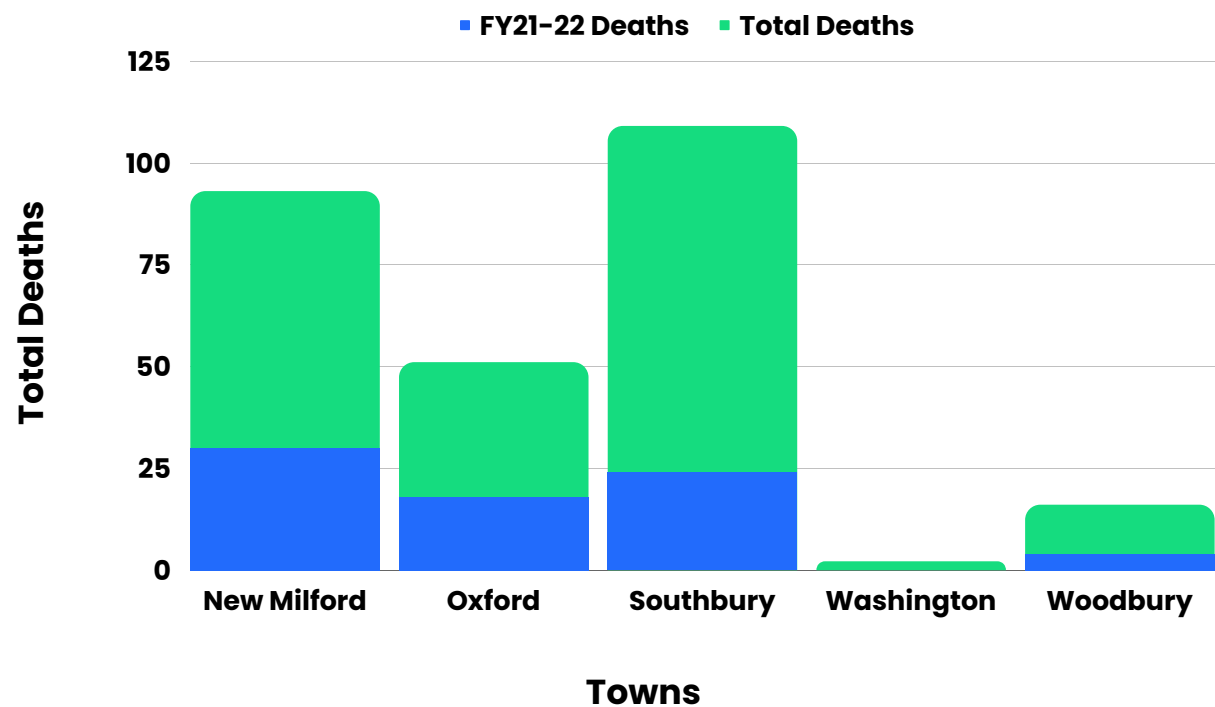


# COVID-19 Data: March 2020 – June 30, 2022

## Cumulative Cases Among HVHD Towns from March 2020 – June 30, 2022



## Total Deaths Among HVHD Towns from March 2020 – June 30, 2022



Source: CT DPH. CT DPH COVID-19 Town Level Data.  
Retrieved July 1, 2022 from [www.data.ct.gov/Health-and-Human-Services/COVID-19-Town-Level-Data/](http://www.data.ct.gov/Health-and-Human-Services/COVID-19-Town-Level-Data/)

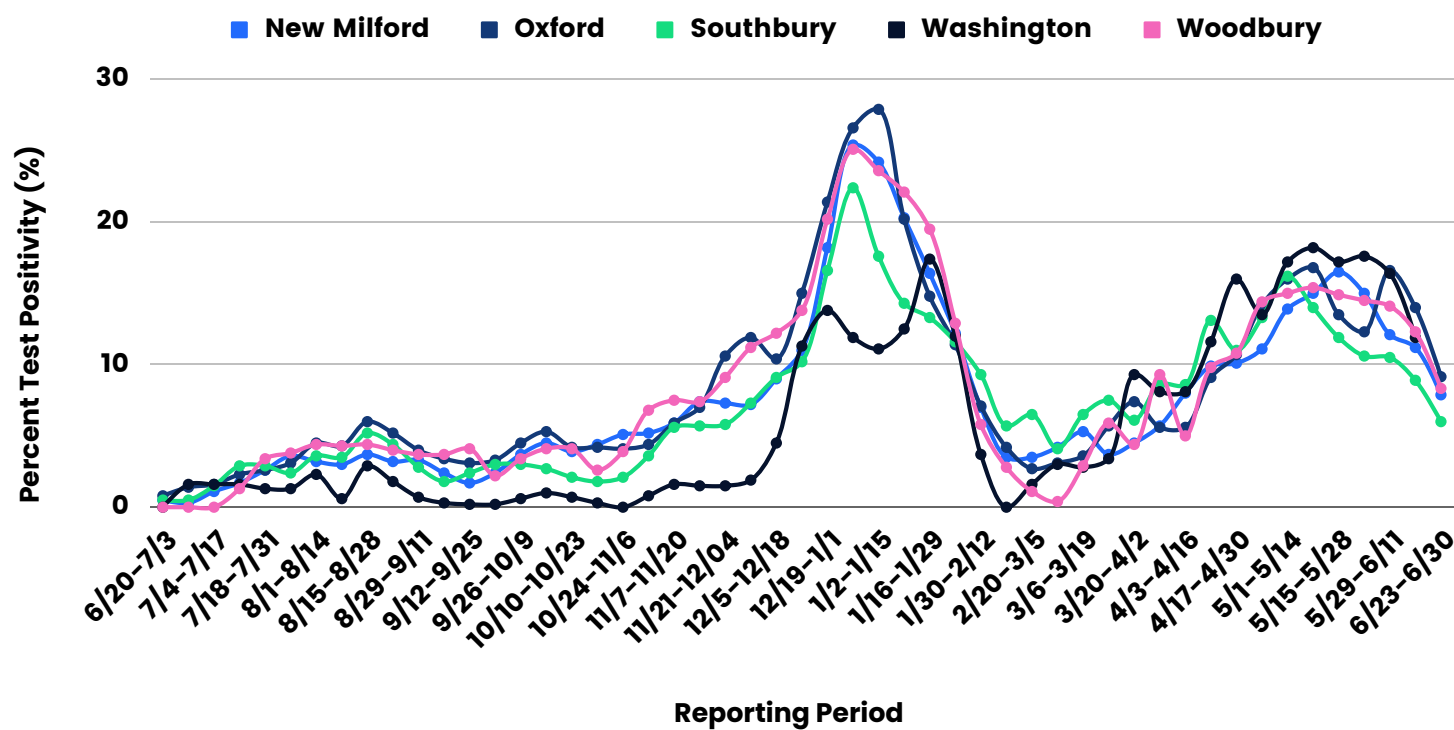


# COVID-19 Data: July 1, 2021 – June 30, 2022

The chart below shows percent test positivity among New Milford, Oxford, Southbury, Washington, and Woodbury. HVHD Towns saw an increase in percent test positivity from December to February as a result of the Delta and Omicron variants.

It is important to note that as of 6/30/22, CTDPH has changed how they report percent positivity. The 6/23-6/30 reporting period reflects a 7 day NAAT test percent positivity.

Percent Test Positivity Among HVHD Towns From 7/1/21 to 6/30/22



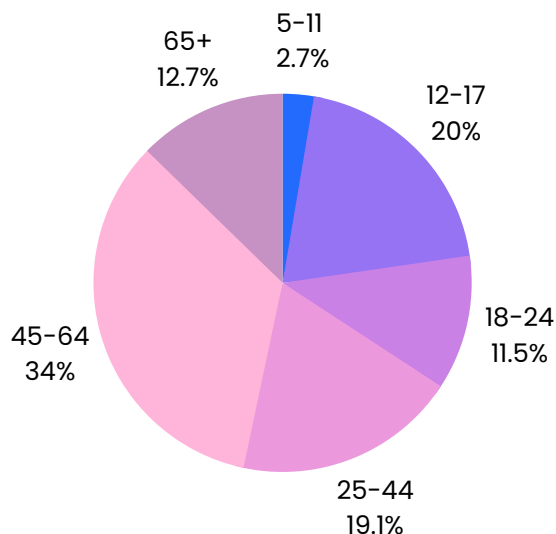
Analyzing cases per 100,000 residents helps track the incidence rate of COVID-19 in the community and allows for standard comparisons between communities.

Source: CT DPH. CT DPH COVID-19 Town Level Data.  
Retrieved July 1, 2022 from [www.data.ct.gov/Health-and-Human-Services/COVID-19-Town-Level-Data/](http://www.data.ct.gov/Health-and-Human-Services/COVID-19-Town-Level-Data/)

# COVID-19 Vaccines: March 2021 – June 2022

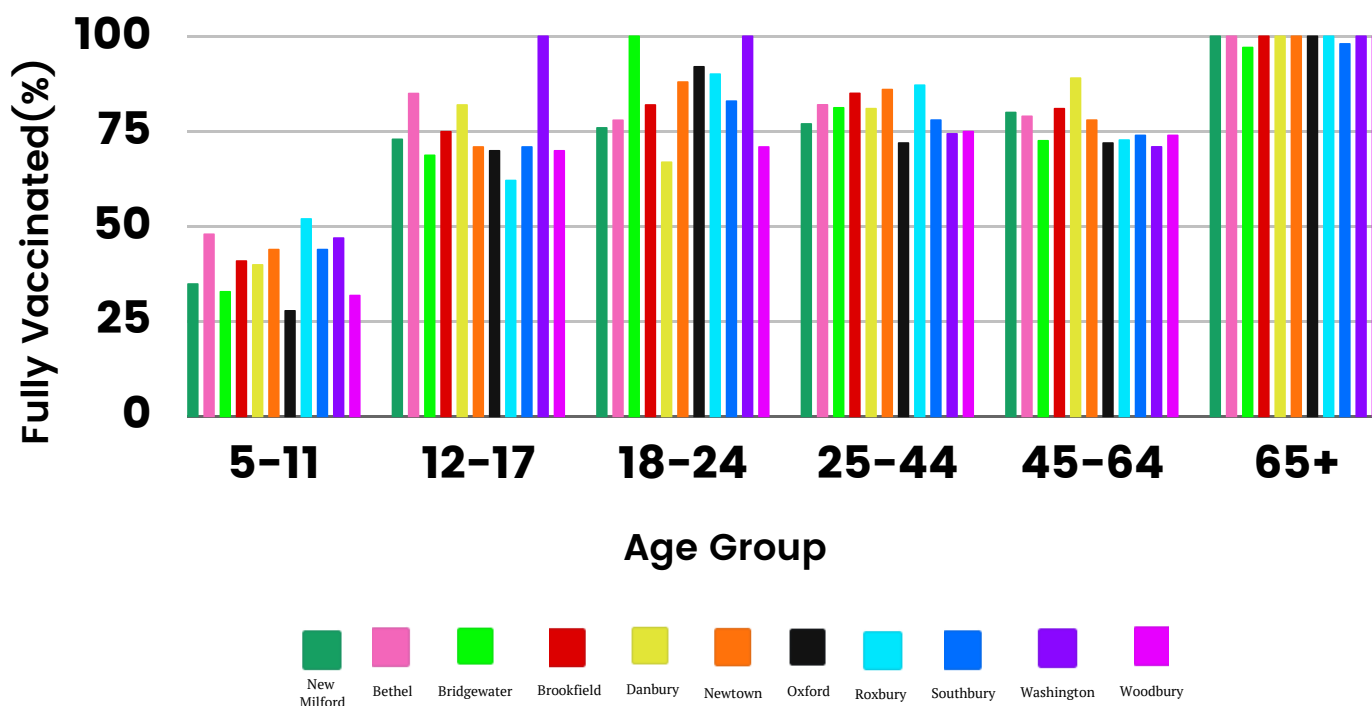
From the inception of our COVID-19 clinics until the end of FY21-22 (March 2021 – June 30, 2022), the majority of individuals vaccinated at an HVHD COVID-19 clinic fall under the **45-64 age range**. The second most vaccinated age group, as seen at an HVHD clinic, was **ages 12-17**.

Age Groups Vaccinated by HVHD from March 2021 – June 2022



## % Fully Vaccinated by Age & Town through June 30, 2022

Fully Vaccinated Percentages between HVHD and the 6 Surrounding Towns



All data are preliminary and subject to change. CT DPH has capped the percent of population coverage metrics at 100%. These metrics could be greater than 100% for multiple reasons or potential data reporting errors.

Source: CT DPH. COVID-19 Vaccinations by Town and Age Group.  
Retrieved July 1, 2022 from [www.data.ct.gov/Health-and-Human-Services/COVID-19-Vaccinations-by-Town-and-Age-Group/](http://www.data.ct.gov/Health-and-Human-Services/COVID-19-Vaccinations-by-Town-and-Age-Group/)

# Division Highlights

*A look back at the  
accomplishments of each  
HVHD division for FY21-22*



**Administrative  
Division**



**Communications  
Division**



**PHEP/MRC  
Division**



**Comm. Health  
Division**



**Env. Health  
Division**

# Director of Health Activities

In addition to her regular duties, Lisa Michelle Morrissey, Director of Health:

- Was appointed to serve on the **Statewide Emergency Response Commission**.
  - The Connecticut State Emergency Response Commission (SERC) was established by Connecticut Law (CGS, Section 22a-600) and is tasked with the implementation of the federal Emergency Planning and Community Right-to-Know Act (EPCRA) in Connecticut. The EPCRA addresses reporting requirements of businesses and responsibilities of state and local governments ([CT State Emergency Response Commission, Membership](#)).
- Was selected as the **President Elect of the CT Associations of Directors of Health (CADH)** (<https://cadh.org/>).
- Was asked to serve on the **CT DPH Public Health Workforce and Equity Committee** alongside the Directors of Health from Hartford and Norwalk and has been meeting weekly with the Commissioner Department of Public Health.
- Was asked to serve on the **State Associations of County and City Health Officials (SACCHO)** and is one of two representatives for the State of Connecticut.
  - State Associations of County and City Health Officials SACCHOs are organizations that represent local health departments or officials at the state level. NACCHO collaborates with SACCHOs on many projects, including joint meetings, membership initiatives, education and training, and national advocacy for local public health. SACCHOs also work with state departments of health and other state and national public health organizations ([SACCHO](#)).
- Was spotlighted as an alumni profile in the New York Medical College's Chironian magazine for her efforts in "Expanding the Reach of Public Health" (NYMC Chironian 2021 - 2022, p. 44).



**LISA MICHELLE MORRISSEY, MPH,  
DIRECTOR OF HEALTH**

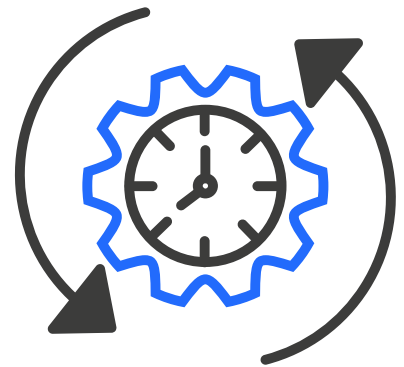
# Administrative Division



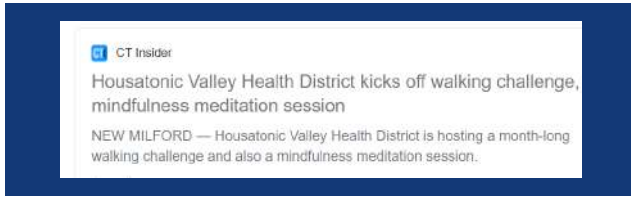
The Administrative Division consists of the Public Health Operations Manager and the Office Manager. They support the day-to-day activities within the health district to ensure that the services we provide to the HVHD community are at the highest standard.

## **During FY21-22, the Administrative Division accomplished:**

- Maintained and Managed the Board of Directors meeting agenda and minutes
- Created onboarding and exit paperwork for employees; maintained personnel files
- Created policies and procedures for the District alongside the Public Health Communications Coordinator
- Maintained the District budget
- Acquired new technologies to support the operations of the District
- Created and implemented dashboards to manage various division performances



# Communication Division



The Communications Division handles internal and external communications and consists of the Public Health Communications Coordinator. This includes communicating with stakeholders, the media, and staff. This division works closely with other departments to ensure it adequately promotes services, accomplishments, and conveys accurate information to the community.

The Communications Division is responsible for enhancing, developing, and promoting the HVHD brand across multiple platforms; accomplished through web programming, multimedia development, public relations, media outreach, social media management, graphic design, and print production.

## During FY21–22, the Communication Division accomplished:

- Drafted and implemented a Communication Strategic Plan
- Increased social media following by **30%**
- Launched a new website & produced web-based forms to be launched during FY22–23
- Grew email distribution lists by **20%**
- Connected with community stakeholders
- Wrote and distributed 10 press releases
- Distributed **37** weekly COVID–19 reports and **10** monthly reports to key stakeholders
- Created and distributed **16** COVID–19 Health District Recommendations to schools, daycares, business, municipalities, and the community.
- Created and distributed various onboarding packets (i.e. new hire, rapid PCR COVID–19 testing, Board of Directors)
- Created and distributed **10** video tutorials to staff





# Public Health Emergency Preparedness (PHEP) Division



The Public Health Emergency Preparedness (PHEP) Division aims to build community relationships and prepare our communities to deal with emergency situations and consists of the PHEP/MRC Coordinator. The Division serves as an educational resource for personal and community preparedness through community building and volunteer recruitment.

## During FY22, the PHEP Division:

- Rebranded our MRC to Housatonic Valley Health District; created a new volunteer onboarding training, designed and distributed new brochures.
- Volunteers assisted at Blood Pressure Screening Clinics, Flu & COVID-19 vaccination clinics, and Community Events (i.e. Woodbury Earth Day); trained in CPR/First Aid & Narcan.
- Secured a travel scholarship to attend MRC Leadership Summit on April 3, 2022.



=486 total MRC  
volunteer hours



=\$20,855.41 monetary  
amount saved

# Community Health Division: Narrative



The Community Health Division provides communicable disease prevention services, routine immunizations, travel immunizations, and more. This division aims to improve patient care and clinical outcomes as well as provide timely and accurate information to the community.

## **During FY21 –22, the Community Health Division:**

- Initiated flu vaccine clinics all HVHD towns
- Offered COVID-19 vaccinations weekly in Southbury and New Milford for ages 5 years+
- Initiated and offered COVID-19 Rapid PCR tests on a weekly basis at our New Milford and Southbury clinic locations.
- Contracted with district and local towns to offer COVID-19 PCR tests to town employees as needed.
- Partnered with senior centers to offer monthly educational programs
- Established a "Coping During Times of COVID-19" grant-funded program with funds from NACCHO 360 and launched the program virtually and in person at 4 locations.
- Onboarded clinical staff to support vaccination clinics.





# Community Health Division: Program Overview



## Community Programs

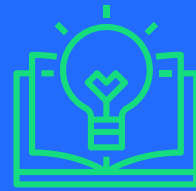
Mindfulness Meditation Sessions

"Coping During Times of COVID-19"

"Healthy Chats with Heid"

(topics included Lyme disease prevention & Immunizations)

Epi-Pen Training session



## Education

**36** COVID-19 Reports

**16** COVID-19 recommendations distributed to businesses, daycares, schools, and the community

**500** Blood Pressure Screenings and pamphlets distributed



# Community Health Division: Immunizations



## COVID-19 and Flu Vaccines

HVHD offered weekly COVID-19 vaccine clinics at both their Southbury and New Milford clinic locations and administered approximately 4,000 COVID-19 vaccines. HVHD also offered Flu vaccine clinics in all five towns and administered approximately 3,000 flu vaccines.

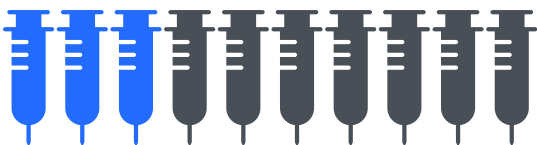
### Number of COVID-19 VACCINES ADMINISTERED during FY21-22



**~5,000**

COVID-19 Vaccines Administered

### Number of Flu VACCINES ADMINISTERED during FY21-22



**~3,000**

Flu Vaccines Administered

## COVID-19 Rapid PCR Testing

HVHD offered weekly COVID-19 Rapid PCR testing clinics at both their Southbury and New Milford clinic locations.

# Environmental Health Division

The Environmental Health Division focuses on the interrelationships between people and their environment, promotes human health and well-being, and fosters healthy and safe communities. This includes providing services such as:

- Food service establishment plan review and inspection
- Septic plan review and related inspections
- Well water testing for potability (through the CT DPH Laboratory)
- Public swimming pool code compliance and inspection

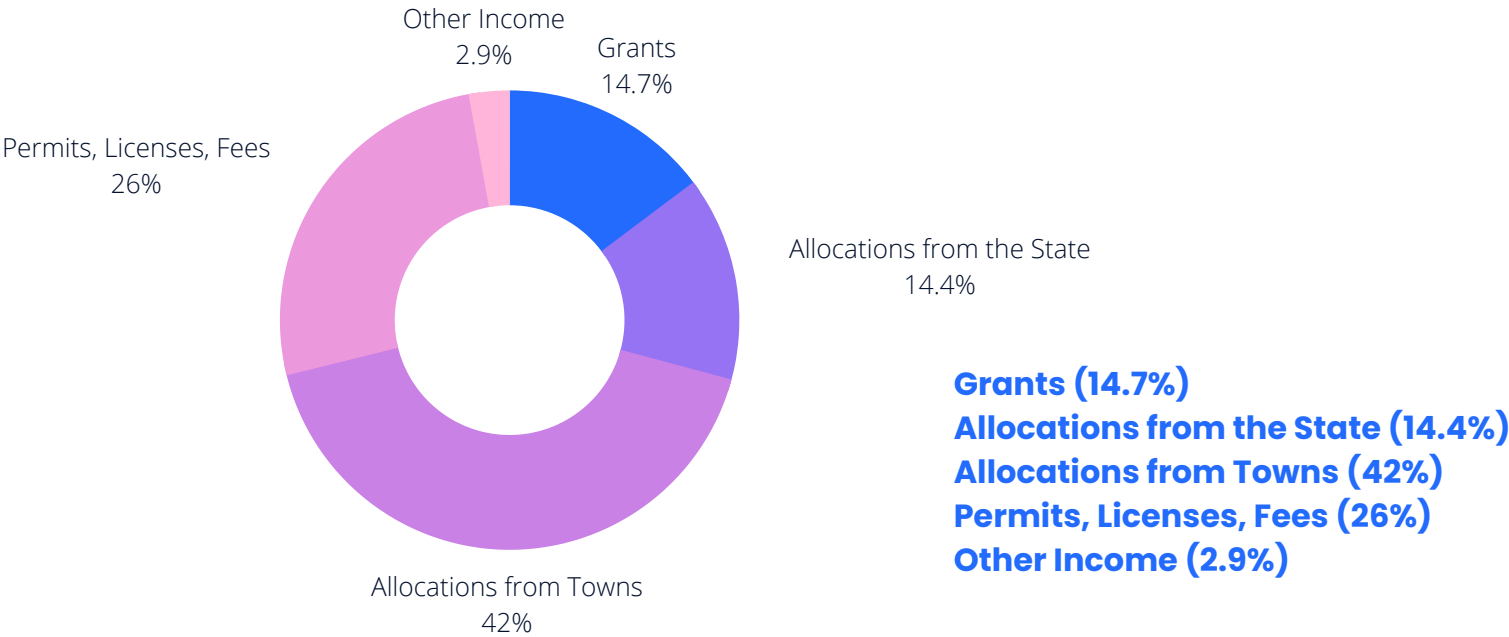
Service	District Total
Temporary Food Reviews	18
Food Establishment Permits	185
Well Permits	95
Building Additions	476
Underground Propane Tank Reviews	11
Soil Tests	150

Service	District Total
Septic Plan Reviews	224
Septic Inspections	165
Permit to Construct	19
Permit to Discharge	100
Tick Samples	117
Public Health Complaints	30
Property File Requests	1138



# Financial Review

## Funding Sources



## Grant Funding During FY21-22

NACCHO Professional Development Travel Scholarship to PREP Summit	\$1,800
NACCHO RISE (Respond, Innovate, Sustain, Equip) Award	\$75,000
ASPR NACCHO ORA (Operational Readiness Award)	\$10,000
Robert Wood Johnson Foundation & NACCHO ORA (Global Local Health Exchange) Award	\$30,000
CT DPH PHEP (Public Health Emergency Preparedness)	\$42,472
CT DPH Hospital Preparedness Program Cooperative Agreement (MRC)	\$16,332
CT DPH ELC (Epidemiology & Laboratory Capacity) Sharon HD Subcontractor Grant	\$17,361.29
Total Grants	\$192,965.29
Other	
Allocations from the State	\$188,658.60
Allocations from Towns	\$549,376.87
Permits, Licenses, and Fees	\$340,314.5
Other Income	\$37,474.24
Total Other	\$1,115,824.21



# **Partners & Stakeholders**





# Community Partners

Housatonic Valley Health District recognizes all the partnerships and support we receive from numerous outside agencies. We would like to take a moment to recognize these valuable partnerships.

Town of New Milford  
Town of Oxford  
Town of Sharon  
Town of Southbury  
Town of Washington  
Town of Woodbury  
Town of Roxbury  
Town of Sharon  
Town of Newtown  
Town of Kent  
Brookfield Health Department  
New Fairfield Health Department  
Newtown Health District  
Sherman Health Department  
Naugatuck Valley Health District  
Torrington Area Health District  
New Milford Senior Center  
Oxford Senior Center  
Southbury Senior Center  
Washington Senior Center  
Woodbury Senior Center  
New Milford Social Services  
Oxford Social Services  
Southbury Social Services  
Washington Social Services  
Woodbury Social Services  
New Milford Public Library  
Oxford Public Library  
Southbury Public Library  
Gunn Memorial Library  
Woodbury Public Library  
New Milford Public Schools  
Oxford Public Schools  
Pomperaug Regional School District 15  
Regional School District 12  
Region 14 Schools

Heritage Village  
Grace Meadows  
New Milford Volunteer Corps  
Washington Volunteer Corps  
Medical Reserve Corps Volunteers  
New Milford CERT  
Southbury CERT  
New Milford Youth Agency  
Nuvance Health  
Griffin Health  
RVNA Health  
Waterbury Hospital  
Community Health Center (CHC)  
Connecticut Institute for Communities (CIFIC)  
CT Department of Public Health  
CT Department of Energy & Environmental Protection  
CT Department of Mental Health & Addiction Services  
CT Office of Early Childhood (OEC)  
Western CT Council of Governments  
Northwest Hills Council of Governments  
Naugatuck Valley Council of Governments

# HVHD Staff & Board of Directors

Housatonic Valley Health District recognizes that none of this work could be done without the support of the HVHD team.

## HVHD Staff:

### **Director of Health:**

Lisa Michelle Morrissey, MPH, *Director of Health*

### **Administrative Division:**

- Marvalee Washington–Allen, MS, *Public Health Operations Manager*
- Jennifer Luis, *Office Manager*

### **Communications Division:**

- Ruth Quattro, MPH, *Public Health Communications Coordinator*

### **PHEP/MRC Division:**

- Megan McClintock, MS, *PHEP/MRC Coordinator*

### **Community Health Division:**

- Heidi Bettcher, RN, BSN, *Community Health Nursing Supervisor*
- Emily Gomes, RN, BSN, *Community Health Educator (RN)*
- Daniel Sibio, *Medical Biller*

### **Environmental Health Division:**

- Joe Kmetz, *Chief Sanitarian*
- Lisa Yu, MHA, *Sanitarian II*
- AJ Cresci, *Sanitarian I*

## HVHD Board of Directors:

Anne Neumann, Chair, *Woodbury*

Chris Cosgrove, *New Milford*

Michael Crespan, *New Milford*

Fred D'Amico, *Oxford*

Larry Ellis, *Oxford*

Dr. Jeremy Levin, *New Milford*

Dr. Paul Nee, *Southbury*

Dean Sarjeant, *Washington*



**Public Health**

**FY 21-22**

**HVHD**

**Public Health Data**





# 2021 Public Health Data: Table of Contents

The following information is an overview of the health of residents within the jurisdiction of Housatonic Valley Health District (New Milford, Oxford, Southbury, Washington, & Woodbury) and is sourced from the DataHaven 2021 Equity Profiles for each HVHD town, CT DPH Data, and Maven Reports. This information will be taken into consideration when planning future programs.

---

## 25

RISK FACTORS

---

## 26

CHRONIC DISEASES

---

## 27

MENTAL HEALTH

---

## 28 - 30

COMMUNICABLE DISEASES

---

## 31

SEXUALLY TRANSMITTED INFECTIONS

---

## 32 - 33

ACCIDENTAL DRUG RELATED DEATHS

---

## 34

DEPARTMENT OF SOCIAL SERVICES: PEOPLE SERVED

# 2021 Public Health Data: Risk Factors

## Selected Health Risk Factors, Share of Adults, Among HVHD, Greater Waterbury, & Connecticut; 2015–2018

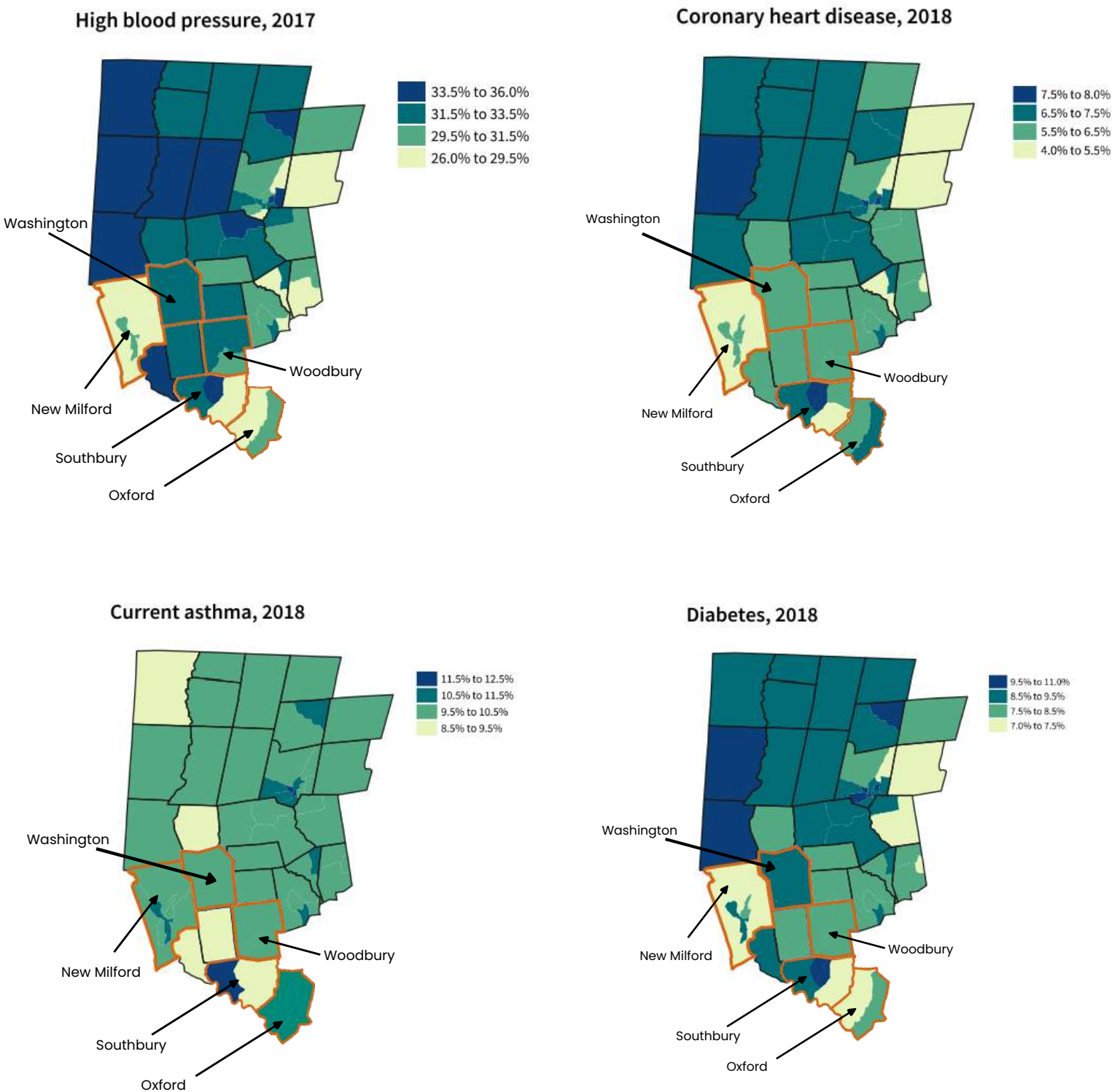
	Self-Reported Good Health Status	Food Insecurity	Smoking	Obesity	Exercise 3+ days a week
New Milford	60%	8%	13%	27%	61%
Oxford	61%	9%	16%	21%	70%
Southbury	59%	3%	6%	27%	70%
Washington	58%	–	–	–	–
Woodbury	66%	5%	8%	23%	71%
Greater Waterbury	58%	14%	17%	31%	59
Connecticut	59%	13%	14%	29%	0%

**New Milford** has one of the **highest rates of obesity** when compared to the other HVHD towns but is still lower than Greater Waterbury and the State of Connecticut's rates of obesity in 2018. **Oxford** had **the highest percentage of smokers** when compared with the other HVHD towns, Greater Waterbury, and the State of Connecticut. **Southbury** had the **lowest percentage of food insecurity** when compared to the other towns, Greater Waterbury, and the State of Connecticut. **Washington** did **not report any data** besides the Self-Reported Good Health Status. **Woodbury** has the **second highest rate of obesity** when compared to the other HVHD towns.

Source: 2021 Equity Profile (New Milford, Oxford, Southbury, Washington, Woodbury). Retrieved June 9, 2022 from [www.ctdatahaven.org](http://www.ctdatahaven.org).

# 2021 Public Health Data: Chronic Diseases

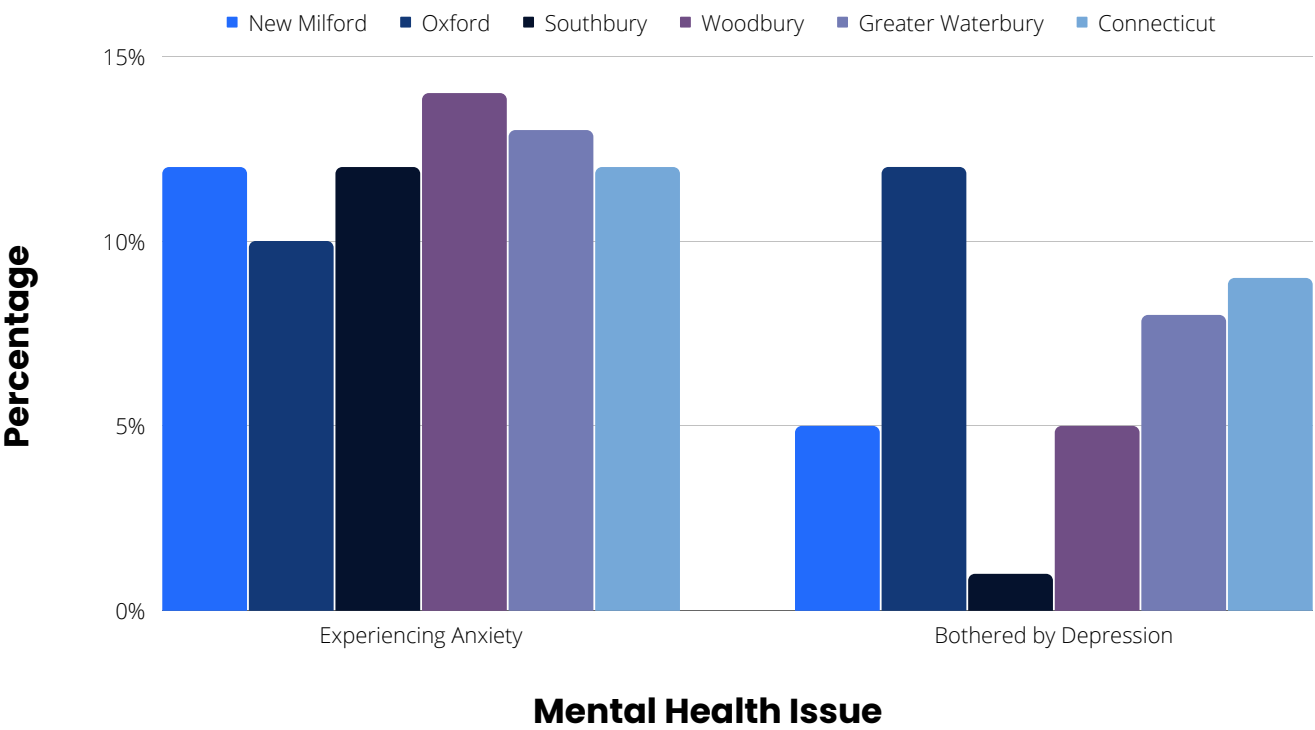
## Chronic Disease Prevalence, Share of Adults by Census Tract, HVHD



Source: **Figure 19.** 2021 Equity Profile (New Milford, Oxford, Southbury, Washington, Woodbury). Retrieved June 9, 2022 from [www.ctdatahaven.org](http://www.ctdatahaven.org)

# 2021 Public Health Data: Mental Health

## Selected Mental Health Indicators, Share of Adults, 2015–2018



Residents of **New Milford** reported **experiencing anxiety** more than being bothered by depression. **Oxford** had the **highest reporting of being bothered by depression** when compared with the other HVHD towns, Greater Waterbury, and Connecticut. **Southbury** had the **lowest percentage** of being bothered by depression. **Washington** did not have any data on these mental health indicators. **Woodbury** had the **highest percentage of experiencing anxiety** when compared with the other HVHD towns, Greater Waterbury, and Connecticut.

Source: **Table 9.** 2021 Equity Profile (New Milford, Oxford, Southbury, Washington, Woodbury ). Retrieved June 9, 2022, from [www.ctdatahaven.org](http://www.ctdatahaven.org).

# 2021 Public Health Data: Communicable Diseases

## Communicable Disease Cases in District Reported to HVHD, FY21-22

	New Milford	Oxford	Southbury	Washington	Woodbury
Campylobacteriosis*	9	3	5	0	2
Cryptosporidium*	2	0	4	0	0
E. Coli (Shiga Toxin)*	2	0	0	0	0
Giardiasis*	0	0	0	0	1
Influenza A & B	23	23	12	2	5
Lyme	286	52	112	54	49
Pertussis*	1	0	0	1	0
Salmonella	5	2	1	0	1
Shingles	0	1	0	0	0

Source: Connecticut Electronic Disease Surveillance System. Retrieved July 20, 2022 from [www.edss.dph.ct.gov/](http://www.edss.dph.ct.gov/)

**\*= definitions on pages 29 – 30**

# 2021 Public Health Data: Communicable Diseases

## Communicable Disease Definitions & Causes

Disease	Definition
Campylobacteriosis	<p>Campylobacter infection, or campylobacteriosis, is caused by Campylobacter bacteria. It is the most common bacterial cause of diarrheal illness in the United States. Can contract it by <b>eating raw or undercooked poultry or eating something that touched it</b>. They can also get it from eating other foods, including seafood, meat, and produce, by contact with animals, and by drinking untreated water.</p> <p><b>Symptoms:</b> diarrhea (often bloody), fever, and stomach cramps. Nausea and vomiting may accompany the diarrhea. Usually start two to five days after infection and last about one week.</p>
Cryptosporidium	<p>Cryptosporidium is a microscopic parasite that causes the diarrheal disease cryptosporidiosis. Both the parasite and the disease are commonly known as "Crypto." <b>Water</b> (drinking water and recreational water) is the most common way to spread the parasite</p> <p><b>Symptoms:</b> begin 2 to 10 days (average 7 days) after becoming infected with the parasite. Watery diarrhea, stomach pain/cramps, dehydration, nausea, vomiting, fever, and weight loss. Not everyone infected with the parasite experience symptoms.</p>
E. Coli (STEC)	<p>STEC may also be referred to as Verocytotoxin-producing E. coli (VTEC) or enterohemorrhagic E. coli (EHEC). This pathotype is the one most commonly heard about in the news in association with <b>foodborne outbreaks</b>.</p> <p><b>Symptoms:</b> severe stomach cramps, diarrhea (often bloody), and vomiting.</p> <p><b>Incubation Period:</b> The incubation period is usually 3–4 days after the exposure, but may be as short as 1 day or as long as 10 days. The symptoms often begin slowly with mild belly pain or non-bloody diarrhea that worsens over several days.</p>

Source: Center for Disease Control and Prevention (CDC). Retrieved July 20, 2022 from [www.cdc.gov/](http://www.cdc.gov/).

# 2021 Public Health Data: Communicable Diseases

## Communicable Disease Definitions & Causes

Disease	Definition
Giardiasis	<p>Giardiasis is a diarrheal disease caused by the microscopic <b>parasite <i>Giardia duodenalis</i></b> (or “Giardia” for short). Once a person or animal has been infected with Giardia, the parasite lives in the intestines and is <b>passed in stool (poop)</b>. Once outside the body, Giardia can sometimes survive for weeks or even months.</p> <p><b>Symptoms:</b> diarrhea, gas, foul-smelling, greasy poop that can float, stomach cramps or pain, upset stomach or nausea, dehydration. Symptoms of giardiasis generally begin by having 2 to 5 loose stools (poop) per day and progressively increasing fatigue.</p>
Pertussis ("Whooping Cough")	<p>Pertussis, also known as whooping cough, is a highly contagious respiratory disease. It is caused by the bacterium <i>Bordetella pertussis</i>. People with pertussis usually spread the disease to another person by coughing or sneezing or when spending a lot of time near one another where you share breathing space. Infected people are most contagious up to about 2 weeks after the cough begins. Antibiotics may shorten the amount of time someone is contagious.</p> <p><b>Symptoms:</b> Symptoms of pertussis usually develop within <b>5 to 10 days after you are exposed</b>. Early symptoms include, runny nose, low-grade fever (generally minimal throughout the course of the disease), mild, occasional cough, apnea – a pause in breathing (in babies). Later symptoms include paroxysms (fits) of many, rapid coughs followed by a high-pitched “whoop” sound, vomiting (throwing up) during or after coughing fits, and exhaustion (very tired) after coughing fits</p>

Source: Center for Disease Control and Prevention (CDC). Retrieved July 20, 2022 from [www.cdc.gov/](https://www.cdc.gov/).

# 2021 Public Health Data: Sexually Transmitted Infections

FIGURE 22: ANNUALIZED AVERAGE RATES OF NEW CASES OF SELECTED SEXUALLY TRANSMITTED INFECTIONS PER 100,000 RESIDENTS, 2001-2003 THROUGH 2016-2018

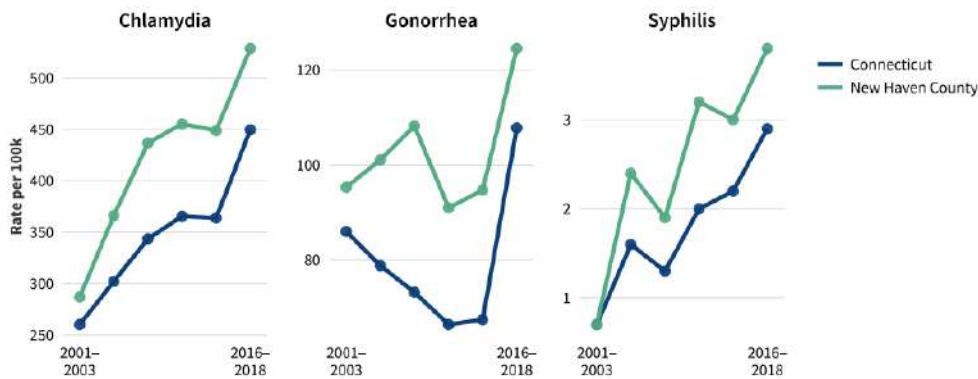
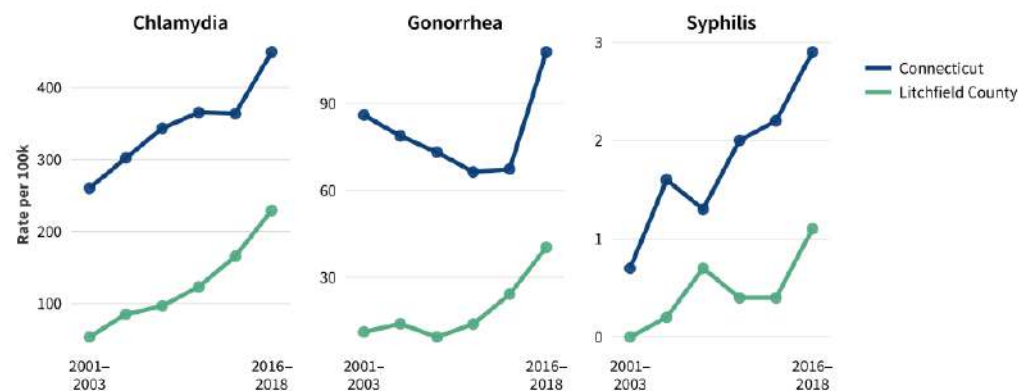


FIGURE 22: ANNUALIZED AVERAGE RATES OF NEW CASES OF SELECTED SEXUALLY TRANSMITTED INFECTIONS PER 100,000 RESIDENTS, 2001-2003 THROUGH 2016-2018



**Figure 22** from the 2021 Equity Profiles (New Milford, Oxford, Southbury, Washington, and Woodbury) show that both Litchfield\* and New Haven\*\* counties are seeing an uptick in Sexually Transmitted Infections (STI) during years 2016-2018. New Haven county reported higher rates of Chlamydia, Gonorrhea, and Syphilis when compared to the State of Connecticut, while, Litchfield County reported lower rates when compared with the State's data.

\*Litchfield County = Bantam, Barkhamsted, Bethlehem, Bridgewater, Canaan, Colebrook, Cornwall, East Canaan, Falls Village, Gaylordsville, Goshen, Harwinton, Kent, Lakeside, Lakeville, Morris, New Hartford, **New Milford**, New Preston, Norfolk, Northfield, Oakville, Pequabuck, Pine Meadow, Riverton, Roxbury, Salisbury, Sharon, South Kent, Taconic, Terryville, Thomaston, **Washington**, Watertown, West Cornwall, Winchester Center, Winsted, **Woodbury**.

\*\* New Haven County = Ansonia, Beacon Falls, Bethany, Branford, Cheshire, Derby, East Haven, Guilford, Hamden, Madison, Meriden, Middlebury, Milford, Naugatuck, New Haven, North Branford, North Haven, Northford, Orange, **Oxford**, Prospect, Seymour, **Southbury**, Wallingford, Waterbury, West Haven, Wolcott, Woodbridge.

Source: **Table 9.** 2021 Equity Profile (New Milford, Oxford, Southbury, Washington, Woodbury ). Retrieved June 9, 2022, from [www.ctdatahaven.org](http://www.ctdatahaven.org)



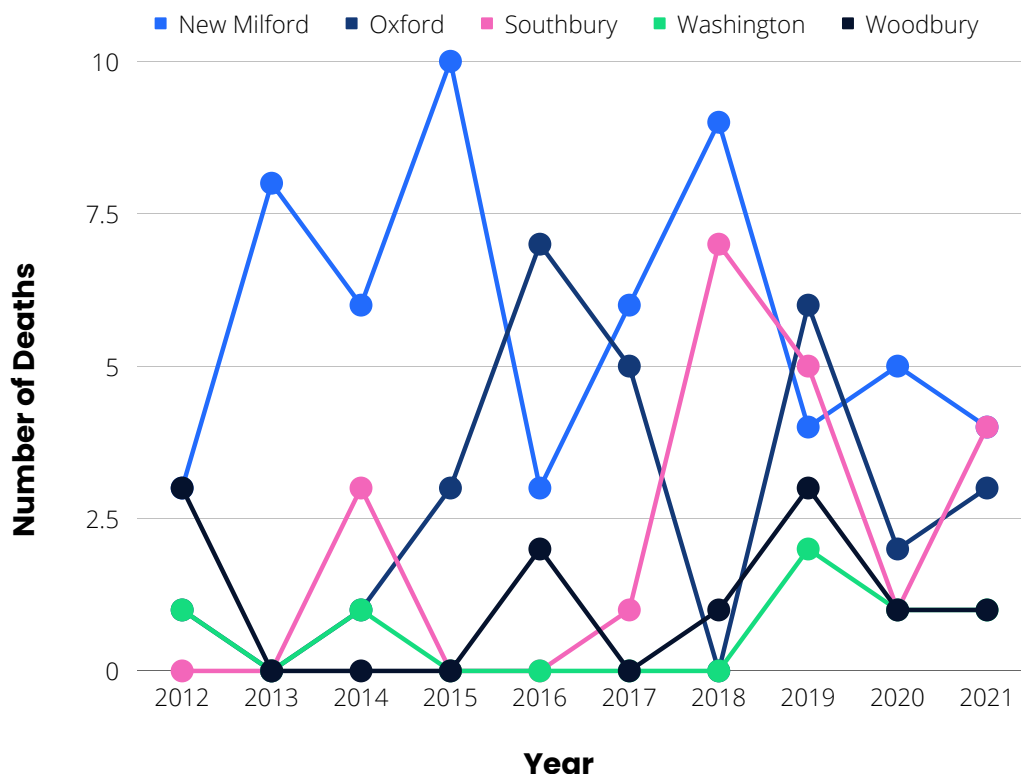
# 2021 Public Health Data: Accidental Drug Related Deaths

This table and graph showcases accidental drug related deaths among residence towns among HVHD towns (**New Milford, Oxford, Southbury, Washington, & Woodbury**), **Litchfield and New Haven Counties**, and the **State of Connecticut** from 2012 – 2021.

\*Residence town is defined as the town where the deceased individual claimed residency.

Accidental Drug Related Deaths, Residence Town; 2012 – 2021											
	2012	2013	2014	2015	2016	2017	2018	2019	2020	2021	TOTAL
New Milford	3	8	6	10	3	6	9	4	5	4	58
Oxford	1	0	1	3	7	5	0	6	2	3	28
Southbury	0	0	3	0	0	1	7	5	1	4	21
Washington	1	0	1	0	0	0	0	2	1	1	6
Woodbury	3	0	0	0	2	0	1	3	1	1	11
Litchfield County	39	61	66	78	83	94	111	129	161	176	998
New Haven County	73	106	116	163	188	236	199	260	304	350	1995
Connecticut	339	458	520	685	862	956	948	1084	1261	1398	8511

## Accidental Drug Related Deaths Among Residence City HVHD Towns, 2012 – 2021



Source: Accidental Drug Related Deaths 2012 – 2021. Retrieved June 9, 2022 from <http://www.ct.gov/ocme>

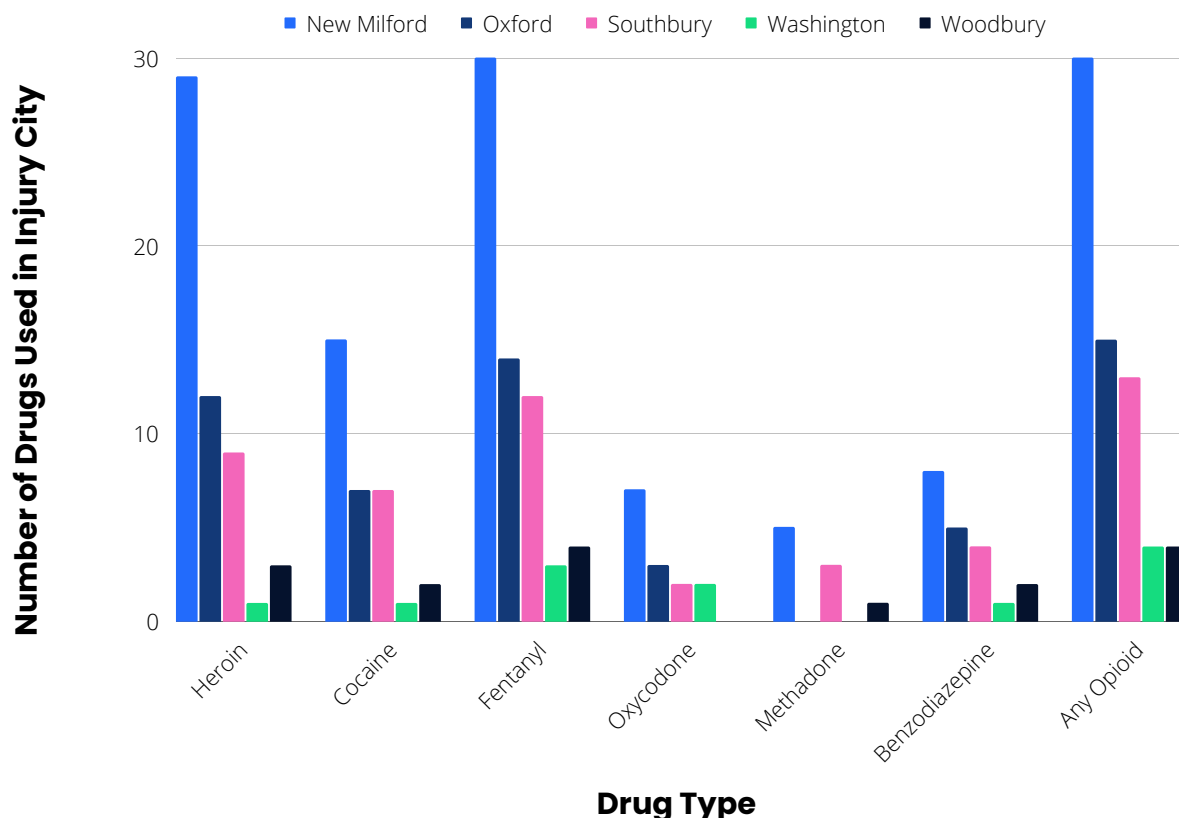
# 2021 Public Health Data: Accidental Drug Related Deaths

This table showcases accidental drug related deaths by injury towns and drug type among HVHD towns (**New Milford, Oxford, Southbury, Washington, & Woodbury**) from 2012 – 2021.

\*Injury town is defined as where the drug use was taking place.

Accidental Drug Related Deaths, Injury Town & Drug Type; 2012 – 2021							
	Heroin	Cocaine	Fentanyl	Oxycodone	Methadone	Benzodiazepine	Any Opioid
New Milford	29	15	30	7	5	8	30
Oxford	12	7	14	3	0	5	15
Southbury	9	7	12	2	3	4	13
Washington	1	1	3	2	0	1	4
Woodbury	3	2	4	0	1	2	4

## Accidental Drug Related Deaths By Injury City and Drug Type HVHD Towns, 2012 – 2021



Source: Accidental Drug Related Deaths 2012 – 2021 . Retrieved June 9, 2022 from <http://www.ct.gov/ocme>

# 2021 Public Health Data: Department of Social Services (People Served)

This table and graphs showcases Department of Social Services People Served among HVHD towns (**New Milford, Oxford, Southbury, Washington, & Woodbury**) during 2021.

Department of Social Services: People Served Among HVHD Towns in 2021									
	Assistance Type				Medical Benefit Plan				Total People Served
	Cash	Food	Medical	Other	Medicaid	HUSKY (A, B, C, D, Limited Benefit)	MSP	Other Medical	
New Milford	101	1897	7952	22	6,732	6,770	1380	164	8048
Oxford	41	420	2155	0	1777	1906	410	17	2170
Southbury	57	585	3318	8	2489	2,604	1202	58	3350
Washington	0	109	730	0	600	635	132	5	736
Woodbury	43	356	1930	5	1552	1,672	447	24	1963

## HVHD Town Populations (Per Capita) Compared to **Total People Served** in 2021



Source: CT Dept. of Social Services – People Served. 2012–2021. Retrieved June 15, 2022 from [www.data.ct.gov](http://www.data.ct.gov)



**New Milford**

10 Main Street  
New Milford, CT 06776  
203.264.9616

**Oxford**

486 Oxford Rd  
Oxford, CT 06478  
203.264.9616

**Southbury**

77 Main Street N #205  
Southbury, CT 06488  
203.264.9616

**Washington**

2 Bryan Plaza  
Washington, CT 06794  
203.264.9616

**Woodbury**

275 Main Street S  
Woodbury, CT 06798  
203.264.9616

[www.hvhd.us](http://www.hvhd.us)



@housatonicvalleyHD



@hvhd\_ct



Housatonic Valley Health District



@HVHD\_CT